



Laem Chabang Logistics Center

- SENKO Logistics Distribution (Thailand) Co., Ltd -

Company History

- 1916** Tomita Shokai was established.
- 1941** Became an affiliated company of Nippon Chisso Hiryo and changed the company name to Nitchitsu Unyu K.K.
- 1946** Nitchitsu Unyu K.K. was dissolved by statutory order.
- 1946** Senko Unyu K.K. was reestablished with a new name.
- 1961** Listed on Section 2 of the Osaka Security Exchange
- 1973** The corporate name was changed to Senko Co., Ltd.
- 1975** Listed on Section 1 of the Osaka Security Exchange
- 1990** Listed on Section 1 of the Tokyo Stock Exchange
- 2017** Established Senko Group Holdings Co., Ltd. To mark the transition to a holding company structure.



Company Profile

Company Name : SENKO LOGISTICS DISTRIBUTION (THAILAND) CO., LTD.



**Location : Pinthong Land 1 130/11-13 M.9, Nongkham ,
Sriracha, Chonburi 20230 Thailand**

Establishment : December 2016

Capital : THB 500,000,000

Capital structure : Senko Group Holding 100%

Business Description : Warehouse Service

(Distribution processing for Temperature of Normal • Cold • Fixed • Frozen)

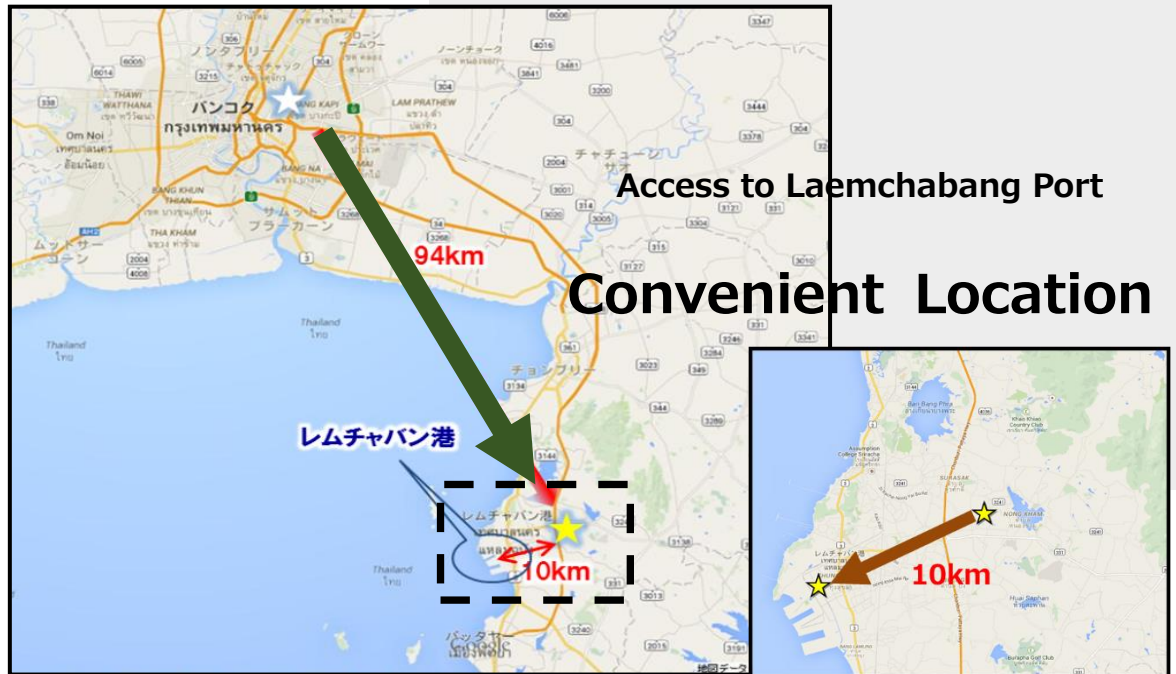
ISO Certificate : Quality 9 0 0 1 : 2 0 1 5

Environment 1 4 0 0 1 : 2 0 1 5

Occupational Health 4 5 0 0 1 : 2 0 1 8

Employee : 58 person

Center Location

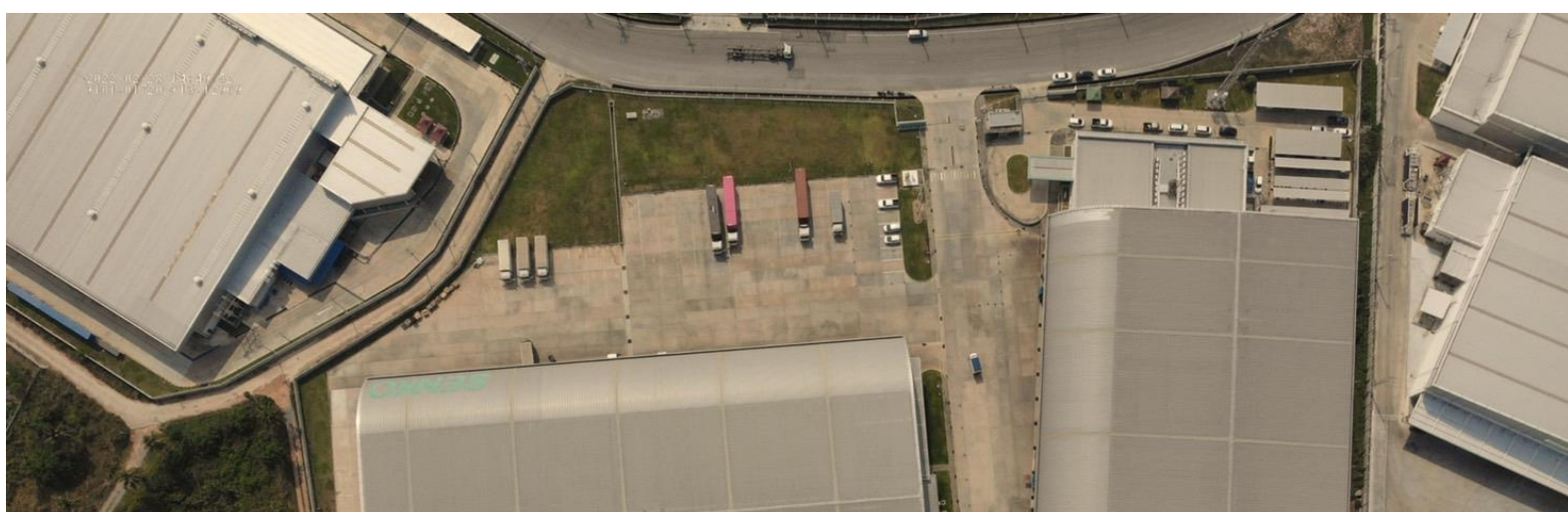


- From Bangkok 94km

Access : In about 1 hour 30 minutes (Car)

- From Laemchabang 10 Km

Access : In about 15 minutes



Warehouse Information

Site area

48,593 m²

Floor area

20,520 m²

Structure

Steel structure,

High-floored

(Partly low-floored)

Lean-to

15m (All Warehouse)

Preventive for a raining

Facility

Have area refrigeration storage

(Operation start from February 2019)



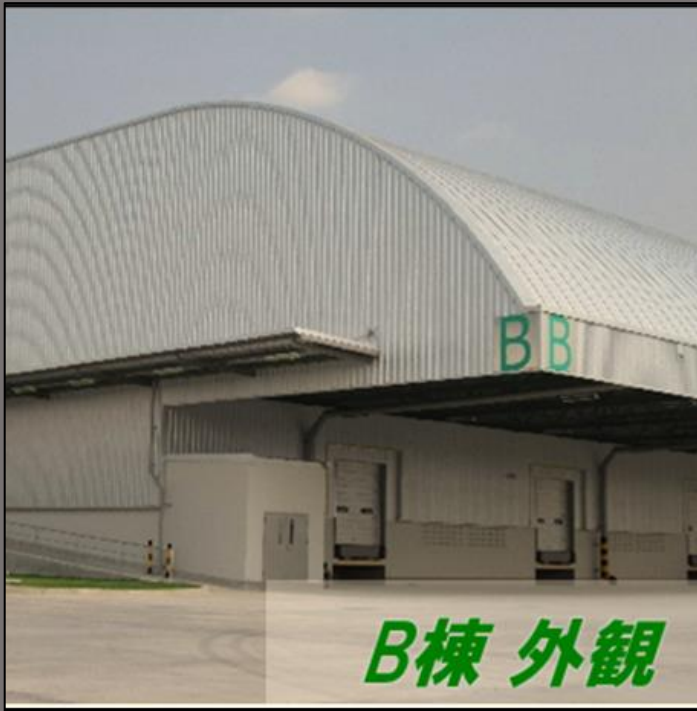
■ Warehouse Specification

		Warehouse A	Warehouse B	Warehouse C
Warehouse Area (m ²)	Total	8,424m ²	6,048m ²	6,048m ²
	Dry Storage	6,804m ²	6,048m ²	4,320m ²
	Cold Storage			1,728m ²
	Low-Floored (Dry)	1,620m ²		
Ceiling (Height)		16m	16m	12m
Storage Capacity (Height)		12m	12m	8m
Roof	Length	15m	15m	15m
Floor Specification	High-Floored area	○	○	○
	Low -Floored area	○	—	—
	Weight Capacity (per m ²)	1.8 Tons	1.8 Tons	1.8 Tons
Loading / Unloading	Berth	8 Trucks	6 Trucks	15 Trucks
		All 29 berths use Over-Sliders		
	Wide over-Slider	2 Trucks	2 Trucks	—

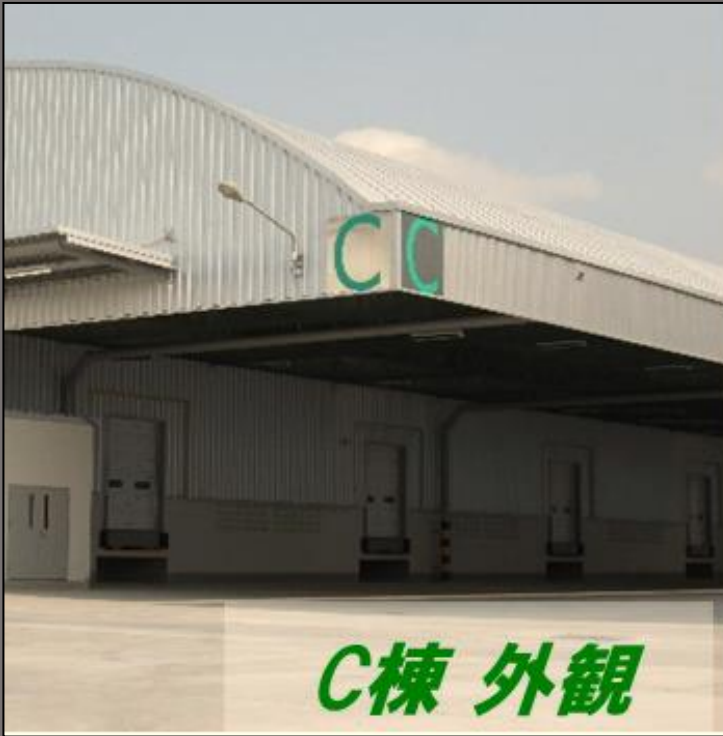




Warehouse A

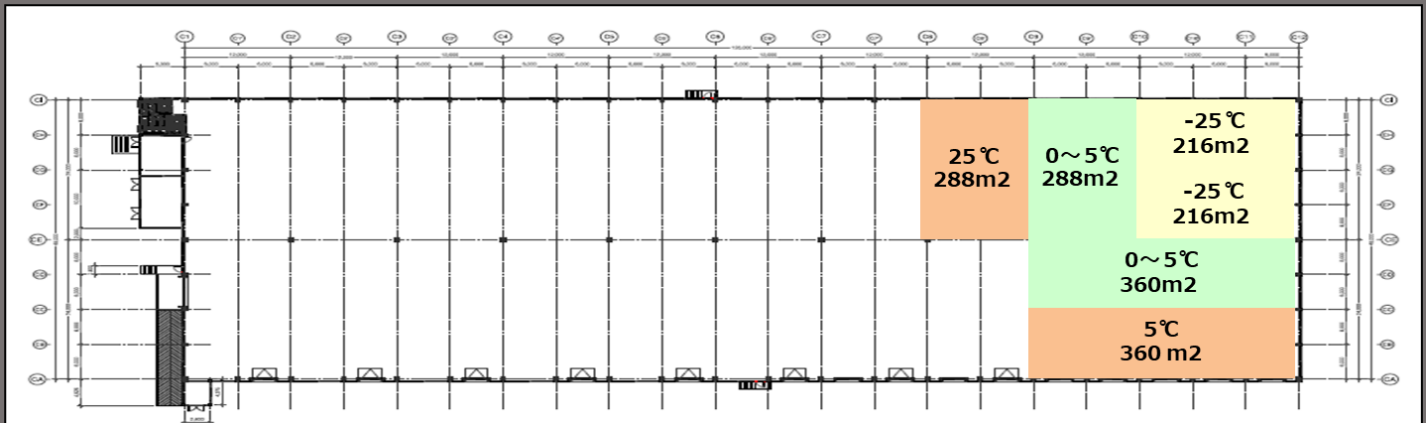


Warehouse B



Warehouse C

Warehouse C 「Refrigeration facilities」



Specification : 1,728 m²

Setting : 4 temperature

- ① +25 °C
- ② + 5 °C
- ③ Chilled (0 °C ~ 5 °C)
- ④ Frozen (- 10 °C)

※Adjustable

Operation : February 2019



- Net to prevention of bird (All Lean-to)
- Prevention of bird damage to customer cargo.

- Over slider

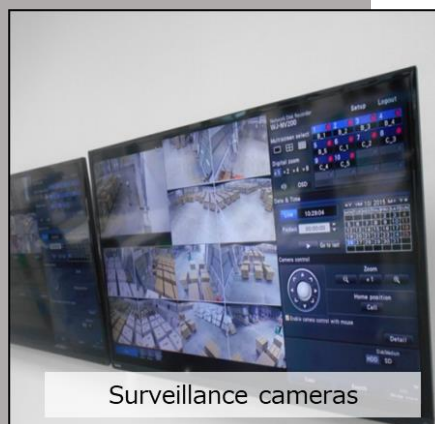
Intrusion prevention of birds, insects and seeds from



Security

■ Entrance

- 1) Manned security guards 24 hours
- 2) Surveillance cameras



■ Inside of warehouse

- 1) Fingerprint scanners system in all warehouse.
- 2) Be well supplied with surveillance camera.
(In warehouse : **34** point)
- 3) Installation the driving recorder to all forklift.

Warehouse Control System

WGC StockSearch

Search Condition:
 Location: N7 SENKO LOGISTICS DISTRIBUTION Customer: 3B 000001 NAGASE (THAILAND) CO.LTD.
 Item Code: Item Search: Complete match
 Lot: Lot No2: Location: Pkg: W/H:
 Arrival Date: Partition Code: Order by: 1 2 3
 Stock Status: Arrival NO: Schedule Pce-Qty: Display Form: According to arrival No. Search(F2)

Search Results:
 1~296
 Previous(F1) Next(F3)

Arrival Date	Arrival NO	Location	W...	Item Code	Item	Lot	Lot No2	UnAllocate U...	UnAlloc Pce-Q...	Allocate Unih...	Alloc Pce
10/Jul/2017	100081300	0811301	01	100143678	XENDY 52201 245118 800173			1	25	0	
10/Jul/2017	100084000	0811301	01	100334471	CYCLODY C6 377244 950202			3	75	0	
10/Jul/2017	100086500	0811301	01	100840980	WDTLON PP 170317			3	75	0	
10/Jul/2017	100086600	0811301	01	100840980	WDTLON PP 170317			1	19	0	
10/Jul/2017	100086700	0811301	01	100840980	WDTLON PP 170317			1	20	0	
10/Jul/2017	100086800	0811301	01	100840980	WDTLON PP 170317			1	24	0	
10/Jul/2017	100087300	0811301	01	100857472	HIPS 2551 N/170305			5	125	0	
10/Jul/2017	100087400	0811301	01	100857748	ABS HF-0660/119856			1	12	0	
10/Jul/2017	100087500	0811301	01	100857748	ABS HF-0660/119856			1	22	0	
10/Jul/2017	100087600	0811301	01	100857748	ABS HF-0660/119856			1	9	0	
10/Jul/2017	100087700	0811301	01	100857748	ABS HF-0660/119940			4	100	0	
10/Jul/2017	100087800	0811301	01	100858040	WHITE MAST 150317			1	10	0	
10/Jul/2017	100087900	0811301	01	100858040	WHITE MAST NO LOT			1	8	0	

Select(F4) VBAH005F6 Clear(F9) Back(ESC)
 M.L.Drongsam@Mongkol

- ① Introduction of WGC system same as system with SENKO(Japan).
- ② Introduction of Barcode system to goods inspection・In-Out by HHT(Handy terminal).
- ③ Inventory management tailored to customer peculiarity.



Distribution Service

Supply to One stop service

~Constructing an integrated transportation system
through collaboration within the Group~



① SENKO (THAILAND)



SENKO LOGISTICS

② BEST GLOBAL LOGISTICS

Forwarding



M - SENKO LOGISTICS
Food distribution

(Refrigeration storage)

DISTRIBUTION (THAILAND)

Warehouse



SENKO LOGISTICS(THAILAND)
Transportation

**DC operation / TC operation / Joint delivery / International nonstop
multiple transportation**

⇒ **Arrangement to customer needs.**

EX.1 Have storage type (DC) Distribution Center



EX.2 No storage type (TC) Transfer Center

